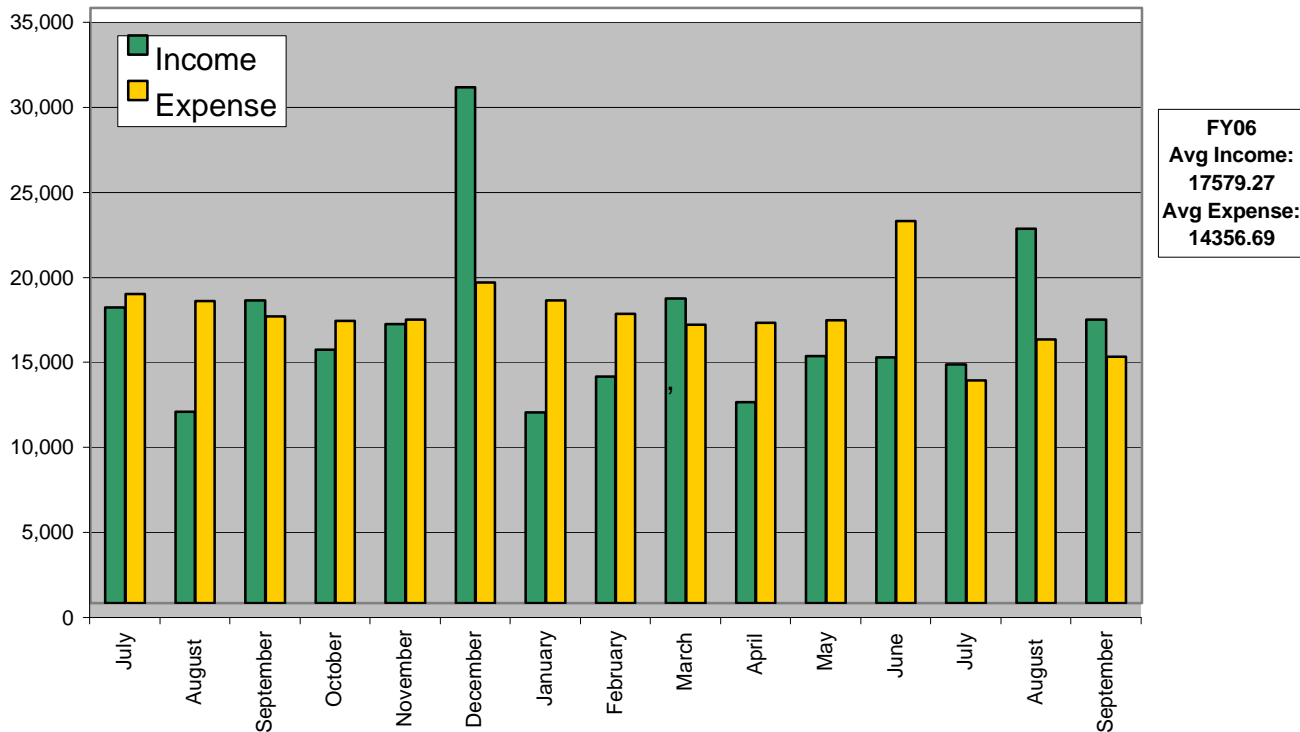


	Income	Interest	Expense	Total
<b>FY04 AVERAGES</b>	<b>17,346.58</b>	<b>6.16</b>	<b>17,109.81</b>	<b>242.94</b>
<b>FY04 TOTALS</b>	<b>208,158.93</b>	<b>73.96</b>	<b>205,317.66</b>	<b>2,915.23</b>

Month	Year	Income	Interest	Expense	Total
July	2004	17,396.84	7.56	18,189.84	(793.00)
August	2004	11,242.16	4.64	17,752.06	(6,509.90)
September	2004	17,808.64	3.36	16,857.66	950.98
October	2004	14,910.65	1.82	16,613.67	(1,703.02)
November	2004	16,399.69	4.90	16,666.50	(266.81)
December	2004	30,337.48	2.66	18,842.87	11,494.61
January	2005	11,226.27	8.15	17,804.34	(6,578.07)
February	2005	13,339.77	2.02	17,003.03	(3,663.26)
March	2005	17,908.48	9.38	16,367.68	1540.80
April	2005	11,801.33	0.00	16,482.06	(4,680.73)
May	2005	14,530.02	12.22	16,616.21	(2,086.19)
June	2005	14,439.90	7.20	22,452.84	(8,012.94)
<b>FY05 AVERAGES</b>		<b>15,945.10</b>	<b>5.33</b>	<b>17,637.40</b>	<b>(1,692.29)</b>
<b>FY05 TOTALS</b>		<b>191,341.23</b>	<b>63.91</b>	<b>211,648.76</b>	<b>(20,307.53)</b>

Month	Year	Income	Interest	Expense	Total
July	2005	14,049.01	2.97	13,078.75	970.26
August	2005	21,998.14	5.41	15,496.92	6,501.22
September	2005	16,690.65	0.00	14,494.40	2,196.25
<b>FY06 AVERAGES</b>		<b>17,579.27</b>	<b>2.79</b>	<b>14,356.69</b>	<b>3,222.58</b>
<b>FY06 TOTALS</b>		<b>52,737.80</b>	<b>8.38</b>	<b>43,070.07</b>	<b>9,667.73</b>

CCF Fiscal Year 2005-2006 Monthly Summary



	Church	Individual	Total	Other
<b>FY04 TOTAL</b>	<b>82,669.08</b>	<b>125,489.85</b>	<b>208,158.93</b>	<b>11,788.50</b>

Month	Year	Church	Individual	Total	Other
July	2004	7,522.84	9,874.00	17,396.84	-
August	2004	4,359.16	6,883.00	11,242.16	-
September	2004	9,165.64	8,643.00	17,808.64	-
October	2004	5,711.65	9,199.00	14,910.65	75.00
November	2004	7,131.69	9,268.00	16,399.69	-
December	2004	14,853.48	15,484.00	30,337.48	-
January	2005	4,382.80	6,843.47	11,226.27	1,680.40
February	2005	5,560.77	7,779.00	13,339.77	2,350.00
March	2005	7,329.48	10,579.00	17,908.48	4,435.00
April	2005	6,129.33	5,672.00	11,801.33	0.00
May	2005	5,111.02	9,419.00	14,530.02	3,766.00
June	2005	5,258.45	9,181.45	14,439.90	0.00
<b>FY05 TOTAL</b>		<b>82,516.31</b>	<b>108,824.92</b>	<b>191,341.23</b>	<b>12,306.40</b>

Month	Year	Church	Individual	Total	Other
July	2005	6,450.01	7,599.00	14,049.01	0.00
August	2005	9,136.14	12,862.00	21,998.14	0.00
September	2005	5,975.32	10,715.33	16,690.65	0.00
<b>FY06 TOTAL</b>		<b>21,561.47</b>	<b>31,176.33</b>	<b>52,737.80</b>	<b>0.00</b>

